



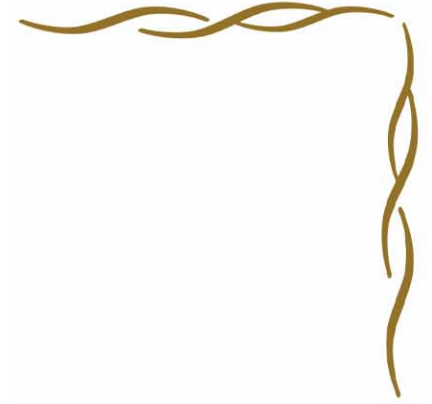
OVERSEAS
TRADING CORPORATION
LOGISTICS

INTRODUCTION



- ❖ OTC LOGISTICS is providing a packaged services, especially, in project logistics all over the Bangladesh
- ❖ Our involvement in this sector of the supply chain was prior to the introduction and availability of the companies that are operational in the southern shores of Bangladesh
- ❖ Our services include heavy lift, customs clearance, road transportation, logistics' consultancy, express delivery, civil and mechanical engineering for major companies in Bangladesh
- ❖ We are specialized in project cargo logistics nationally along with end-to-end supply of critical raw materials & equipment for power generation (e.g. gas, solar, wind, coal etc.) companies of Bangladesh
- ❖ We supply specialized equipment to our clients on a round-the-clock request basis
- ❖ We are offering you the critical components of operational expertise, diversity of services and technological capabilities to ensure your project meets the time frame

ABOUT US



VISION

To be the leading provider of integrated solution of logistics services in Bangladesh.

PHILOSOPHY

Is to continually strive to ensure we deliver world-class logistical services combining state of the art technologies with traditional method of operation that is practiced in Bangladesh. And, deliver this to our customers in order to ensure increased efficiency, reliability and cost effectiveness in all their logistics related needs.

VALUES



Integrity

We are honest, ethical and fair in all our business dealing. We keep our word & deliver on promises.

Team work

Our spirit binds us together and transcends organizational, functional and cultural boundaries; working hard towards a common goal.

Customer's Priority

Customer always comes first. We develop a deep understanding of our customers and responding creatively to their needs

Excellence

We strive to attain the highest possible standard of service delivery in our dealing with clients, through our passionate and painstaking attention to details

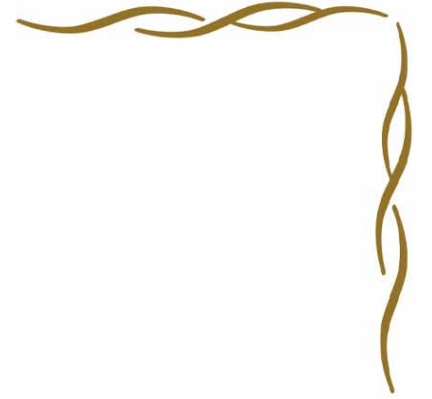
OUR WORDS

More than just a job

Accept accountability

We do not let down our clients,
our workmates or ourselves

Keep our words and deliver on
promises



OUR COVERAGE

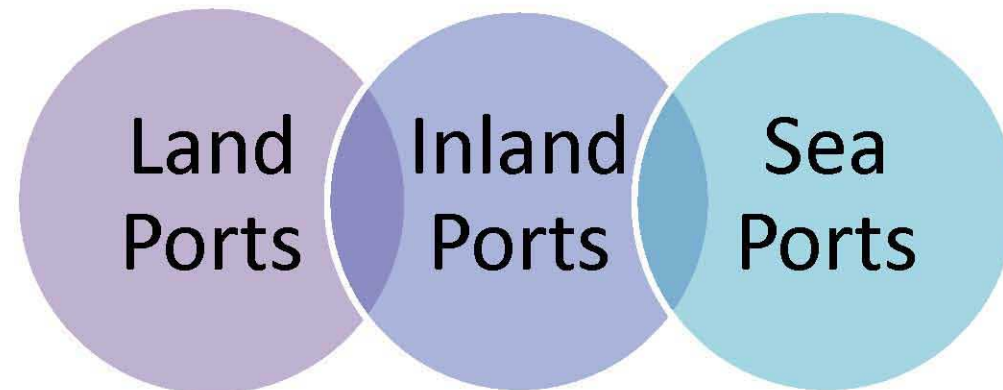
When you think of a dedicated team of logistics professionals studying your business, listening to your concerns and understanding your challenges, you have OTC LOGISTICS Striving to know as much about your operations as you do, we anticipate instead of react, invent rather than adapt, and we always follow through until the job is done.

Whether you are building a project and be your need for logistics consultancy or modular logistics or even end-to-end supply chain, we are delivering integrated logistical solution that produces results and earn your trust.

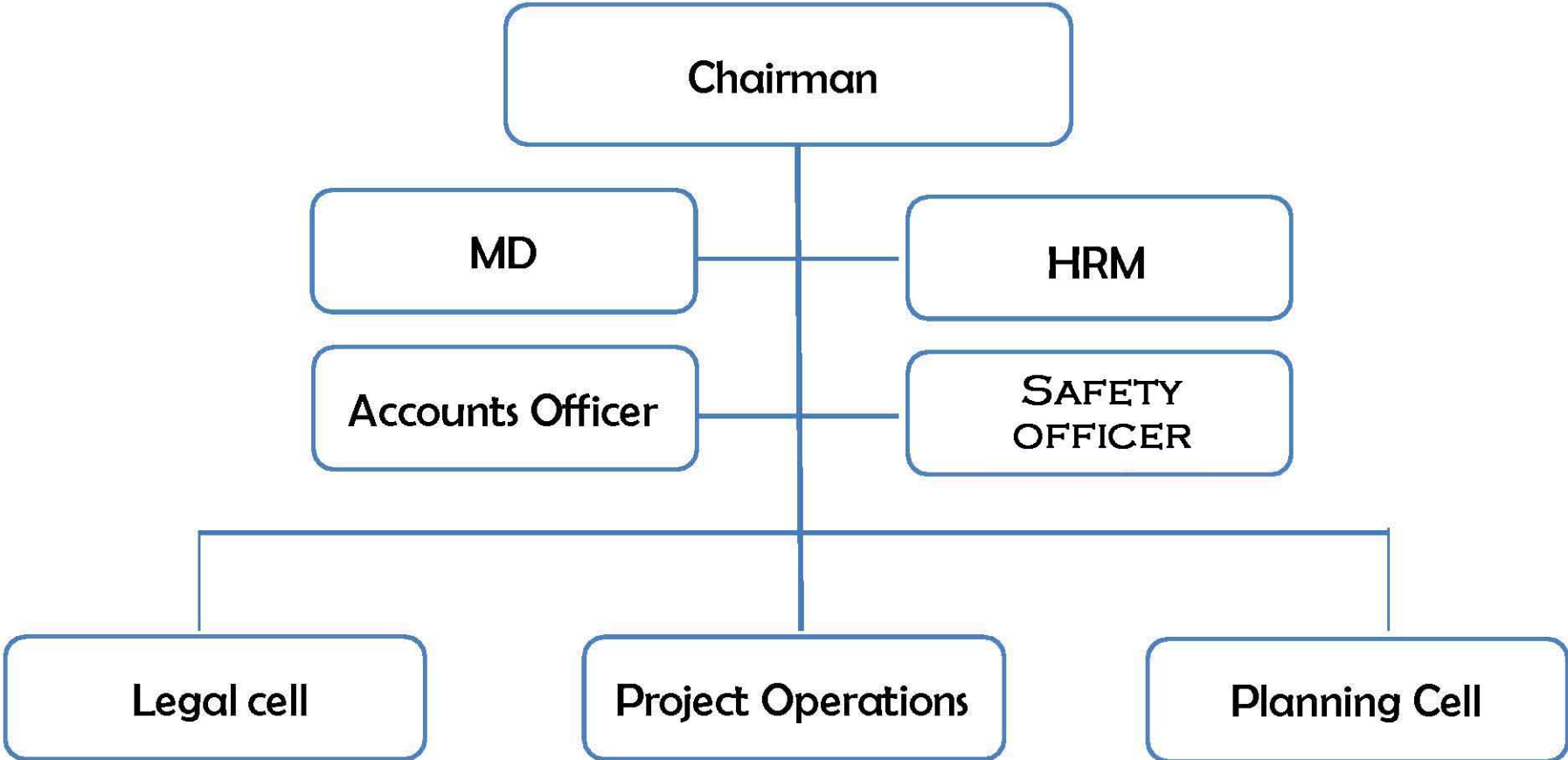
Employees: 50+

Project Completed: 25+

Our Services: Covering major ports of Bangladesh



ORGANIZATIONAL STRUCTURE



OTC LOGISTICS PRINCIPLE



Design networks to
optimize operational
channels

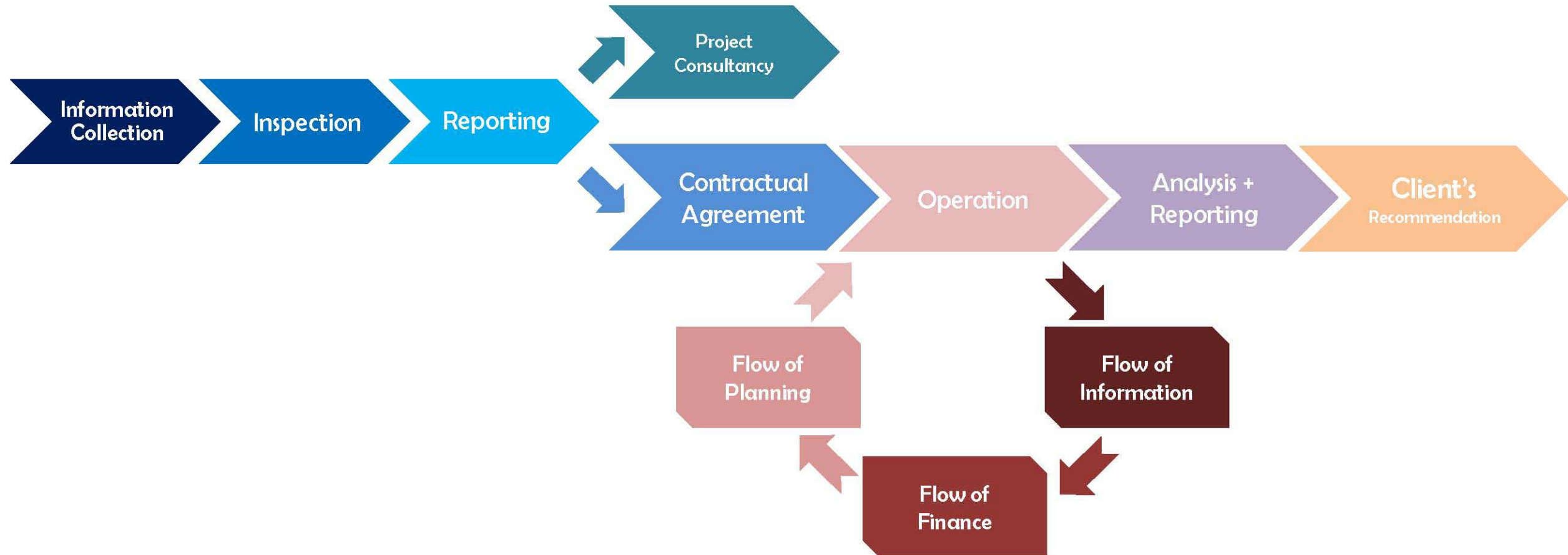
Process map to reduce
non value-added
tasks

Information management
integration to remove
process duplication and
bridge information gaps

Stay in touch with the
ever changing
environment

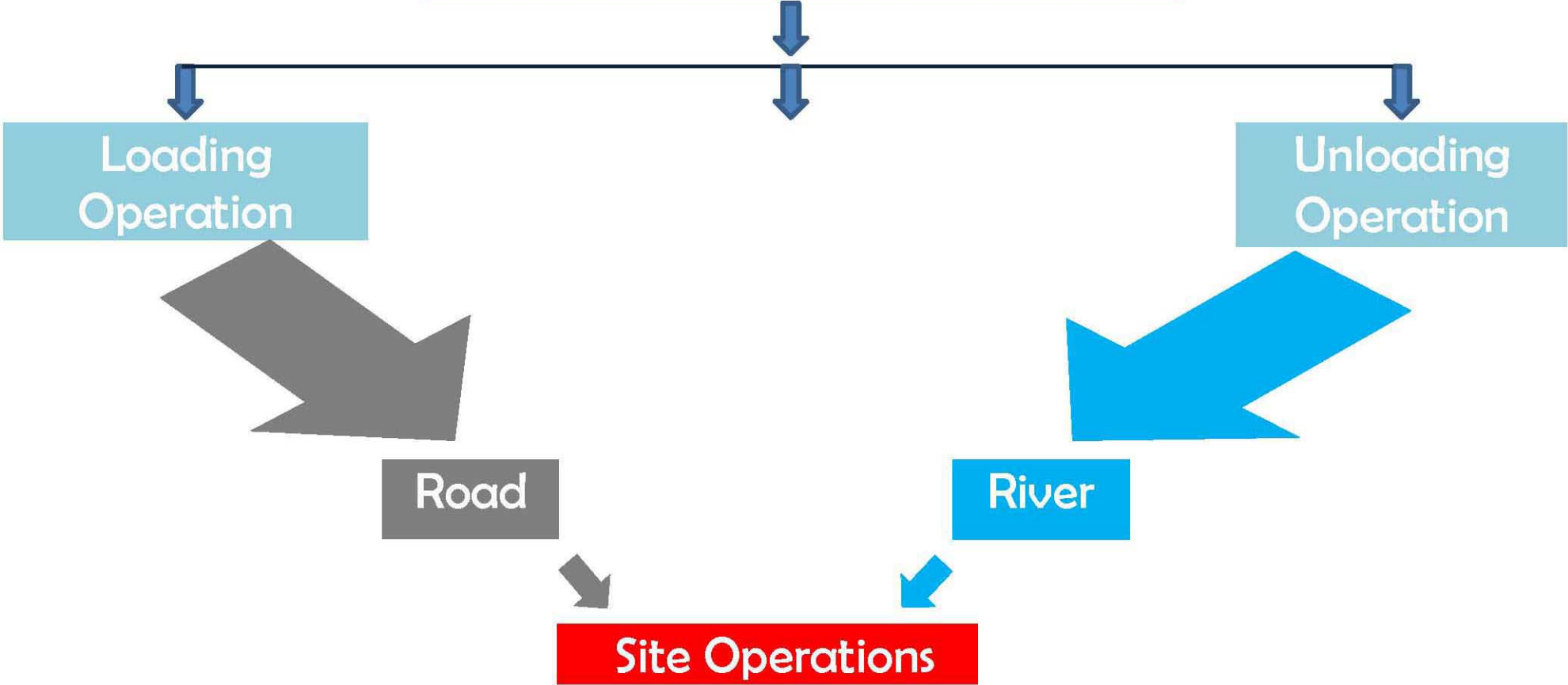
OPERATIONAL FRAMEWORK

- ❑ We are providing you On-shore logistics services
- ❑ We are using a combination of accurate data and technology to present our clients with timely and precise information

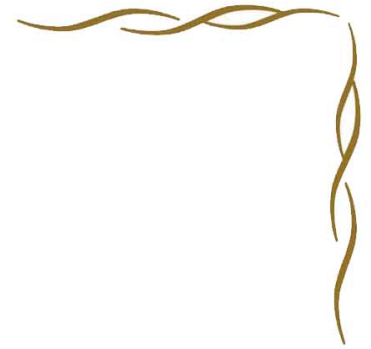


OTC LOGISTICS SERVICES HIERARCHY

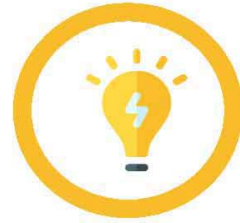
OTC LOGISTICS



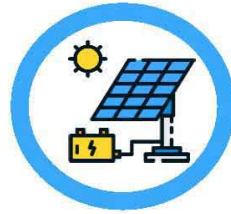
PROJECT LOGISTICS SERVICE



Our specialization:



Energy



Power



Oil

The suite of services provided by OTC Logistics project services includes:

In-land water Transport

Project Construction Services

Heavy & Out of Gauge
Cargo handling

Road Transport

Feasibility studies

Route surveys

Site Inspection

Project Logistics
Consultancy

Supply chain consultancy and
network optimization

Export and import customs
related formalities

Project Progress
Reporting

Port receive and
delivery to project site

On site/Off Site
Weather Mapping

24/7 Customer
Support

OUR TECHNIQUES



Road Transportation

Route Access & Site Prep.

- Finding out all the probable routes; analyses and evaluate each routes critically
- Advise the client on best possible route layout in terms of safety & security, time and treasure
- Our experts are always ready to provide minor adjustment or medium size construction works for route access

Location & Permission

- Critical analyses of discharge location and its pros and cons
- Our strong network means we can get permission(s) for our clients swiftly and efficiently

Contingency Planning

- We plan for emergencies and adjust our plan accordingly

Reporting

- Our regular update help clients to be assured that their cargo is safe in transit

PROJECT LOGISTICS SERVICE



Inland Water Transport:

The suites of sea freight service outlined below are provided in a choice of transit time options:

20', 40' and 45' feet GP and
HC Full Container Loads (FCL)

Operating and non-operating
reefer containers

Special container equipment

Break bulk cargo/non-
containerized loads

In addition to the sea service options **OTC Logistics** offers the following ILWT service expertise for:

Heavy Lift

Cargo Discharging and
Receiving

Project Services

Commercial Goods

Vessel Charter

Special Handling

Our Techniques

In-Land Water Transportation

Route Survey

- Our river route survey team gives an effective solution through analyzing the river routes and various surveys

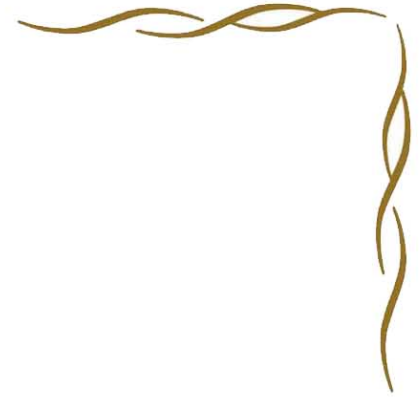
Landing up to Site

- Landing up to the site is a major challenge in river transportation & we are always ready to take any challenge

Safety Measures

- Testing the condition of equipment continuously, secure & methodical lashing and In case of emergency/breakdown we arrange replacement vessel

PROJECT LOGISTICS SERVICE



VENDOR COMPLIANCE

OTC Logistics instigates three-way compliance meetings with major vendors, and vendor forums for remaining vendors. This meeting typically projects an overview of the supply chain objectives of the clients along with an outline of the requirements. Which includes:



HEAVY LIFT



Although a newly functioning department within **OTC Logistics** the company has already achieved a great deal of expertise by engaging correct people within the overall framework and robust monitoring and timely reporting. Our integrated approach in dealing with each heavy lift operation at its own merit makes handling of Heavy Lift Machineries a secured option for our client.

Our Heavy Lift Services include:

- ❖ Full spectrum services including Jetty making, manual and automatic heavy lift services.
- ❖ Comprehensive Work Plan made and supervised by specialists and engineers of the field.
- ❖ Full Warranty Survey.
- ❖ Site Superintendence Services.
- ❖ Safety and Security ensuring tactics, techniques and procedures to ensure maximum protection of the cargo.
- ❖ Handling of large and volumous cargo through Manual Lift (Skidding Method).
- ❖ Handling of large and volumous cargo through Automatic Lift procedure.
- ❖ Combining automatic and manual lift method to provide best solution.
- ❖ Usage of novel as well as established method to ensure maximum safety and security for the cargo and the crew.
- ❖ Robust use of reporting for continuous update to the client.

CARGO HANDLED



Export:

- ❖ Food Items
- ❖ Tiles
- ❖ Ready-made Garments
- ❖ Project Cargo (Re-shipment)
- ❖ Sea Foods

Import:

- ❖ Project Logistics
- ❖ Stones chips and boulders
- ❖ Granite and Marbles
- ❖ Salt
- ❖ Minerals
- ❖ Corn Soya Blended Mixed Powder
- ❖ Nuts
- ❖ Lentils
- ❖ Agro-product
- ❖ Agro-Technologies
- ❖ Automobile
- ❖ Auto Spears
- ❖ Food, Fruits and Ready to Eat Foods
- ❖ Medical Equipment
- ❖ Steel and Iron Product
- ❖ Chemicals
- ❖ Commercial Items like- footwear, fashion accessories
- ❖ Factory machineries
- ❖ Raw materials for manufacturing plant usage (e.g. plastic resin, calcium carbonate, ingot, copper cathode, etc.)

Experiencing Projects

We have successfully completed more than 25 projects around Bangladesh only within the last 3 years

Sheet Pile Driving for River Protection and Land Bracing

Chapainawabganj 100 MW Power Plant

Pipe and empty cylinder transportation and Unloading (40' container)

Container transportation and unloading

Bharat Heavy Electricals Ltd. (BHEL)

Hunan Chang Zhong Machinery Co. Ltd. & Centex Bangladesh Ltd.

Rampal Power Plant

150 MW KPCL Power Plant

Loading, Transportation and Unloading of iron rod

BIFPCL jetty construction

Metro rail CP5 Transportation of project logistics (40' containers)

Western Zone Power Distribution Company Limited Loading, Transportation and Unloading of Transformer and Accessories for two Location

Transportation and Unloading of 400mm, 600mm,800mm water pipe

LPG tank transportation and Unloading

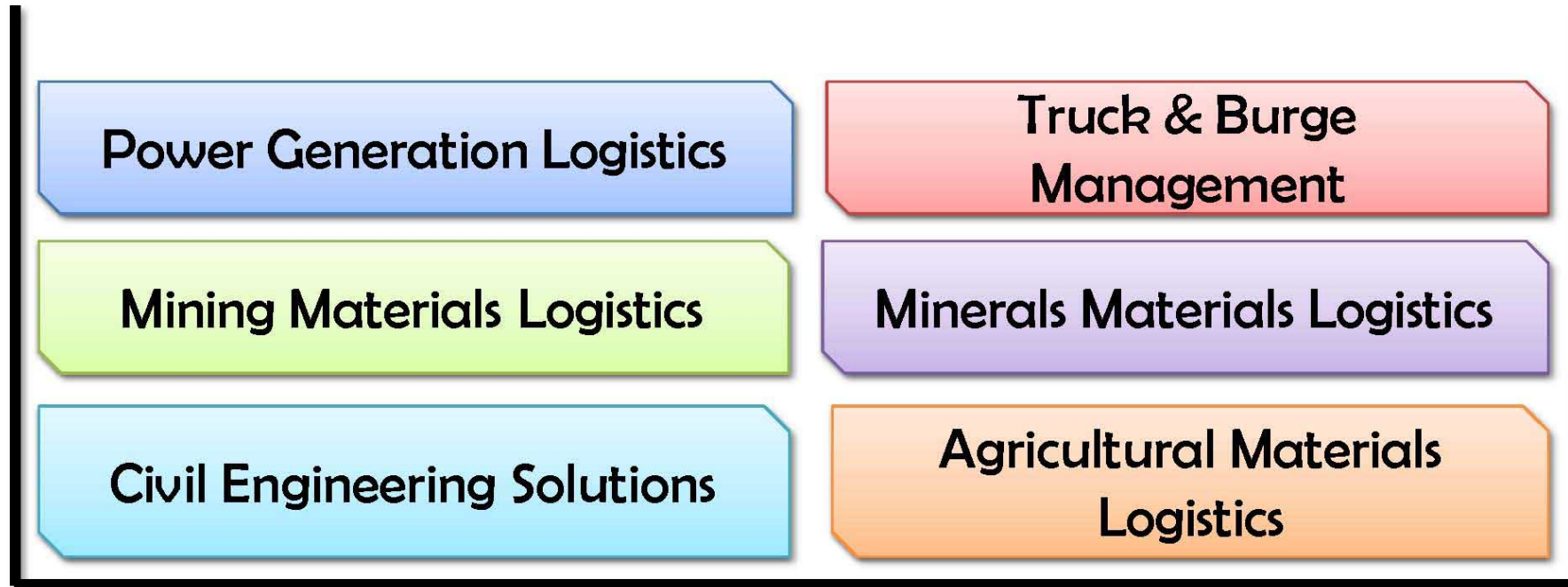
Equipment Supply

Transportation of project logistics (20', 40' & ODC) cargo

EXG (BD) Limited Metro Rail: CP-7

TMSS LPG empty cylinder transportation and Unloading (40' container)

Our Capacity



A bundle of services & sourcing are providing within a single basket

Our Partners



BLUE SHARK FABRICATION
& INSTALLATION



LARSEN & TOUBRO



List of Completed and Ongoing Project

SN	Project Name	Client Name	Month/Year of Work	Work Scope	Work Value
01	CREC Project	Centex BD Ltd	Sep'19	Transportation of Equipment	26,00,000.00
02	MSTPP Structure Transportation Project	ABC India	Sept19-	Transportation of power plant structure (24 Consignment)	2,30,00,000.00
04	TMSS LPG Plant	TMSS	Nov19-Feb20	General Cargo Transportation	20,00,000.00
05	L&T Khulna- Mongla Rail Bridge Project	Disha Logistics	Dec'19-Jan'20	Vehicle Recovery using Heavy Lift Method	30,00,000.00
07	CREC Project, Bhanga	Centex BD Ltd	Sep'20-	Transported general cargo	1,20,00,000.00
09	BM LPG Plant	B.M. Gas	Feb'20-Apr'20	Generator Transportation, Unloading and Placing	45,00,000.00
10	MSTPP	OTC	Sept'19-	General cargo and Structure Transportation	1,50,00,000.00
11	Chawkuria Power Plant	Posco	Sept'20-Nov'20	Sheet Pile Carrying and Installation; Power Plant Heavy Machineries Loading-Unloading	3,00,00,000.00
12	G-Gas Chalna LPG Site	Energypac	Dec'20-	Pontoon Bridge Repair	12,00,000.00

List of Vehicles

SL No.	List of Vehicles	Specifications	Total
01	Trailer	Hino	10 pcs
02	Low Bed Trailer	12 Wheel	01 Pcs
03	Low Bed Trailer	26 Wheel	01 Pcs
04	Low Bed Trailer	42 Wheel	01 Pcs
05	Crane	25 Ton	01 pcs
06	Crane	50 Ton	01 Pcs
07	Crane	75 Ton	01 Pcs
08	Mobile Crane	50 Ton Capacity	01 pcs
09	Pick and Carry Crane (Hydra)	14 Ton Capacity	01 pcs
10	Forklift	5 Ton	01 pcs
11	Excavator	.3 bucket	03 pcs
12	Excavator	.5 bucket	01 pcs

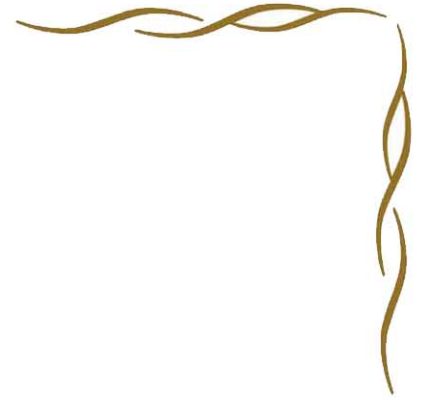
OTC Logistics enjoys a wide arching and robust network to sources enough vehicles and equipment in order to handle medium sized project in Bangladesh. Our stringent guideline means that the vehicles and equipment employed by OTC Logistics Limited is safe to be used in project and secure to be employed. So every party, both contractors as well as client is a winner at OTC Logistics.

Heavy Lift (Manual) Equipment

SL No.	Machine Name	Specification	Numbers
01	Winch Machine	1000 Ton Capacity	01
02	Winch Machine	700 Ton Capacity	01
03	Power Pack	500 Ton Capacity	01
04	Power Pack	300 Ton Capacity	01
05	Hydraulic Jack	200 Ton Capacity	08
06	Hydraulic Jack	150 Ton Capacity	10
07	Hydraulic Jack	100 Ton Capacity	06
08	Hydraulic Jack	50 Ton Capacity	04
09	Bi-dimensional Roller	1.5"	162 Pic
10	Industrial Chain	10 Ton Capacity	16
11	Sling-30 Fit long	2.5" Dia	16
12	Sling-200 Fit Long	2.5"	10
13	Sling-30-60 Fit Long	1.5"	37 Pic
14	Shackle	10 Ton	07 Pic
15	Shackle	25 Ton	40 Pic
16	Shackle	15 Ton	22 Pic
17	Shackle (Small Size)	130-140 Pic	
18	Skid Beam	42 Ft	04
19	Skid Beam	30 Ft	04
20	Hand Winch	50 Ton Capacity	01
21	Slipper Wood (Long Pieces)	Varied Dimension	5500 Pcs
22	Wood (Small whole silver)	Varied Dimension	3000 Pcs
23	Gas Curter	02 Set	
24	Welding Machine	02 Set	
25	Four Point Pulley	500 Ton Capacity	02 Set
26	Three Point Pulley	500 Ton Capacity	02 Set
27	Two Point Pulley	500 Ton Capacity	02 Set
28	Single Point Pulley	500 Ton Capacity	07 Set

Heavy Lift (Manual) Equipment

SL No.	Machine Name	Ton/Inch/Fit	Numbers
29	Halogen Light	200 Watt	04 Pic
30	Halogen Light	100 Watt	06 Pic
31	Crane Hydraulic	25,50,80, 100 Ton Capacity	03 pcs
32	Crawler Crane	50, 100,150 Ton	03 pcs
33	Excavator	.3	01
34	Excavator	.5	01
35	Excavator	.7	01
36	Payloader	9.50	01
37	High-Bed Trailer	14/18 Wheel	08
38	Low-Bed	42 Wheel 68 Wheel	
39	14-Ton Pick and Carry Hydra	01	
40	Open Truck	06-Wheeled and 10-Wheeled	
41	Submersible Pump	-	03
42	Man Power	200-230 Gang (Trained)	



Our Project Works in Picture

Manual Heavy Lift Equipment of OTC Logistics



Manual Heavy Equipment of OTC Logistics



Manual Heavy Equipment of OTC Logistics



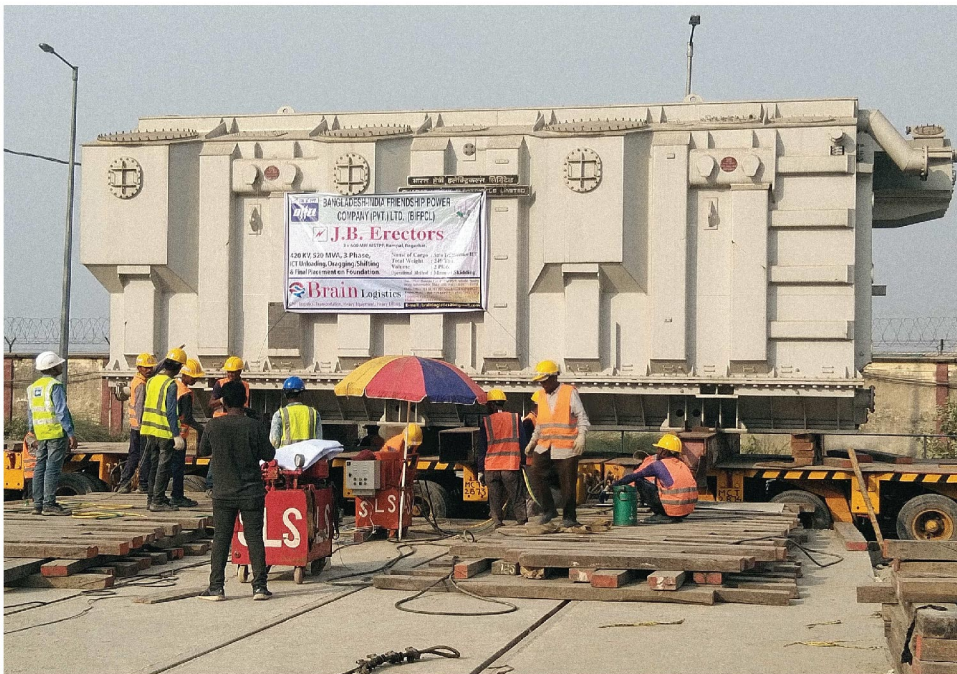
Manual Heavy Equipment of OTC Logistics



Manual Heavy Equipment of OTC Logistics

Rampal Thermal Power Plant







Blue Shark Fabrication & Installation at Rampal Power Plant





Team of OTC Logistics



Centex BD Ltd.CREC



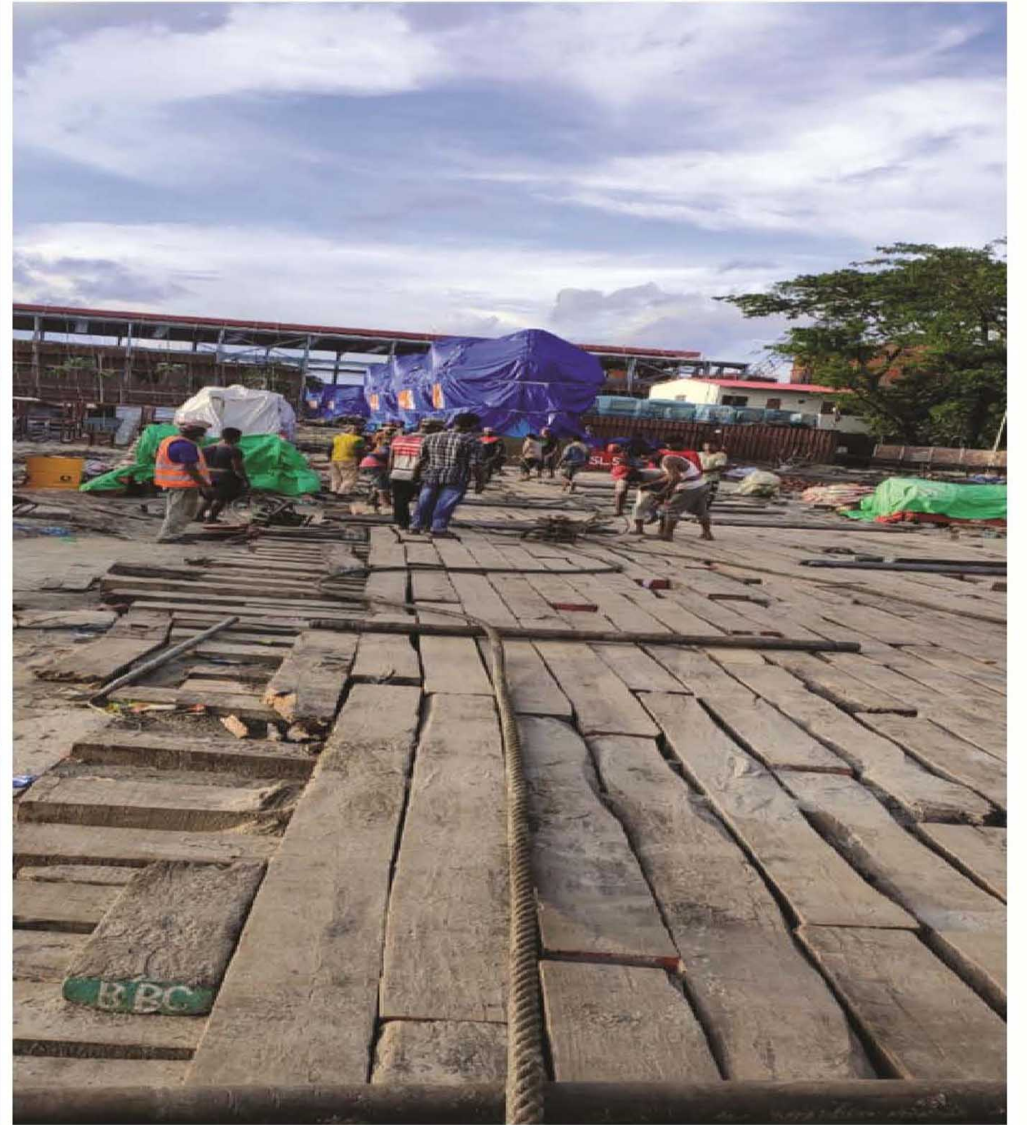
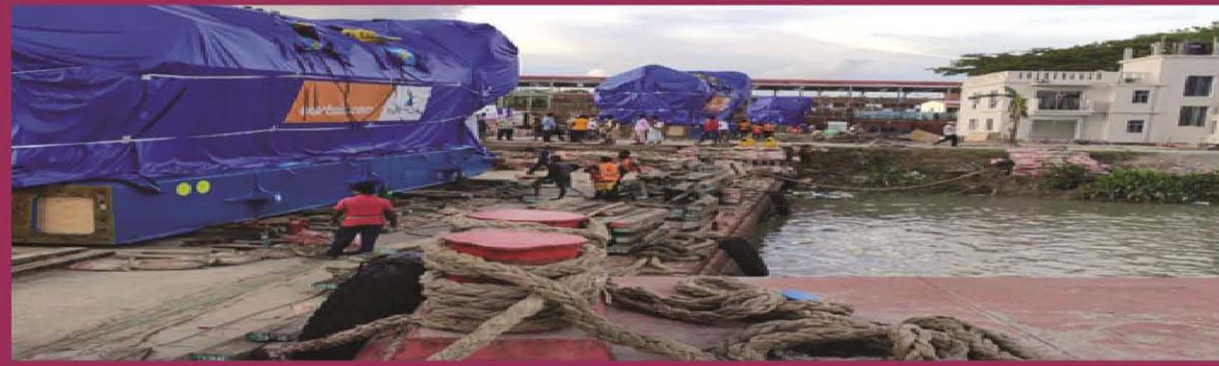
Centex BD Ltd. CREC



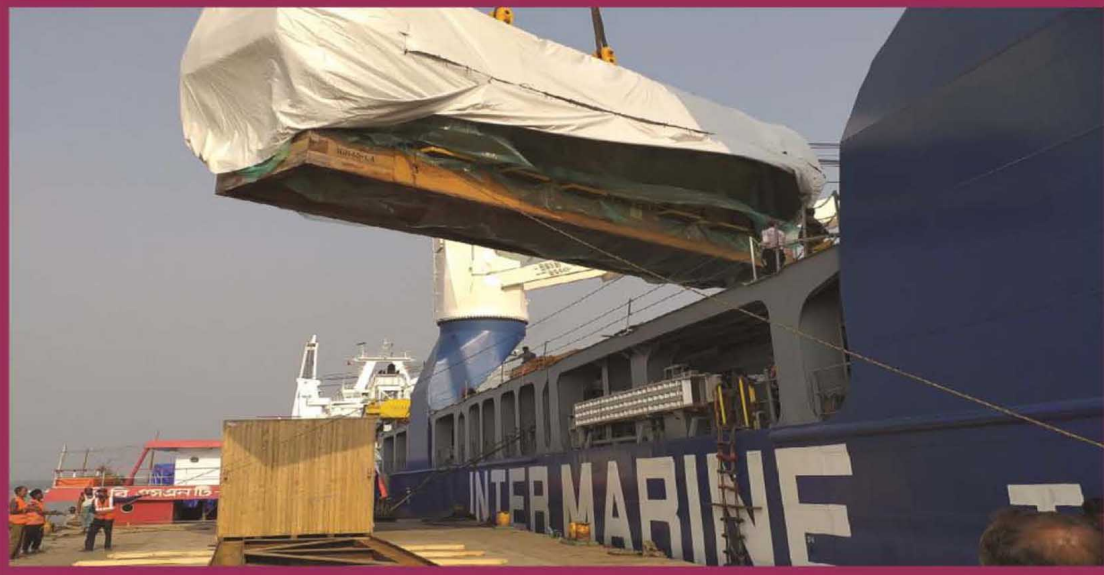
UNITED PAYRA POWER LTD.



UNITED PAYRA POWER LTD.



BANGLA TAC JULDA, CHITTAGONG



115 MW IPP PLANT ENERGYPACK POWER VENTURE LTD.





Mongla Port Tetty



Thakurgoan Power project Gauripur 162 ton MAN Energy solutions



Thakurgoan Power project Gauripur 162 ton MAN Energy solutions



NESCO(Northern Electricity Supply Company Ltd. 195 ton Energypac



BANGLADESH INDIA FRIENDSHIP POWER



BANGLADESH INDIA FRIENDSHIP POWER



BANGLADESH INDIA FRIENDSHIP POWER



BANGLADESH INDIA FRIENDSHIP POWER



Rampal Power Plant



Rampal Power Plant



Rampal Power Plant



Rampal Power Plant





AISL(Acorn Infrastructure Services Ltd.) 3m. Up 222 ton



AISL(Acorn Infrastructure Services Ltd.) 3m. Up 222 ton



AISL(Acorn Infrastructure Services Ltd.) 3m. Up 222 ton



AISL(Acorn Infrastructure Services Ltd.) 3m. Up 222 ton

Temporary Jetty Construction



Temporary Jetty Construction



Temporary Jetty Construction



Temporary Jetty Construction



Temporary Jetty Construction



Temporary Jetty Construction

Steel Sheet Piling



Steel Sheet Piling



Our Address

Head Office: 39, KDA Approach Road, Sonadanga, Khulna.

Cell: +88 01714067627, Cell: +88 01793 598742

Dhaka Office: H# 16, R# 10, Level# 03, Gulshan-01, Dhaka.

Cell: +88 01939 844919

Chittagong Office: World Trade International, Agrabad, Chittagong.

Cell: +88 01831 700347

Benapole Office: Shahjahan Mansion, Benapole Bazar, Benapole, Jashore.

Cell: +88 01720 928983

Vomra Office: Vomra land port, Satkhira.

Cell: +88 01718 461509

Payra Office: Patuakhali Road, Kolapara, Patuakhali.

Cell: +88 01914 986808

Email: otccnf@gmail.com, Website: www.otc-bd.com